



**WORLD'S BEST
ALLOY BULLBARS**

East Coast Bullbars (ECB Pty Ltd)

Tel: 07 3897 5700

Fax: 07 3283 1168

ecb@ecb.com.au www.ecb.com.au

29 Snook St
Clontarf QLD 4019
Australia

Po Box 122
Margate QLD 4019
Australia

BI38SY

REPLACES: 30.10.12
REVISED: 01.07.14

FITTING INSTRUCTIONS

IVECO DAILY 01-14 ON BIG TUBE PROTECTION BAR (WITH FOG LIGHTS) VEHICLE FRONTAL PROTECTION SYSTEM (VFPS) FOR AIR BAG & ADR COMPLIANT VEHICLES

Check installation hardware before commencing.

Special Equipment: T25 Torx bit with associated drivers

NOTE: Should vehicle not have fog lights, an aftermarket wiring harness (available from ECB) will need to be wired to the low beam side if the vehicles head light system.

1. Lift bonnet
2. Remove grille (seven Philips head screws), four across top and three in openings on lower front. Gently pull grille forward to remove.
3. Remove front splash guards from wheel arches. Two 10mm head bolts on chassis rails(per side), three 8mm head screws from wheel arch and two 8mm head screws from under bumper ends, bumper to splash guards. One 10mm head bolt from under chassis rail at radiator area centre of vehicle. **See figure 1.** Disconnect front and rear halves for re-fitment of rear half only, two 8mm head screws.
4. Remove two PK screws from inside of head light filler panels in grille area. Allow to hang. **See figure 2.**
5. From under front of wheel arch, remove outer two 16mm head bolts from steel bumper bracket where it meets the chassis support. Remove fog light wiring from side of mount. Disconnect fog lights (if fitted). **See figure 3.**
6. Using a small screw driver, remove four plastic caps from front of bumper. From behind bumper caps, remove four 15mm head bolts.
7. Remove bumper brackets from side of chassis, three 16mm head bolts (per side). **See figure 4.**
8. Fit ECB steel mounts (supplied) to outside of chassis rail where original equipment bracket was removed. On drivers side, use three M12 x 75 bolts flat washers, spring washers, 90mm x 50mm bolt washer, two M10 x 40 bolts, flat washers, spring washers, 110mm x 50mm bolt washer and nuts. For passengers side, use one M12 x 40 bolts, flat washers, spring washers in top hole, two M12 x 50 bolts, flat washers, spring washers, bolt washer and one M10 x 40 bolt, spring washer, spring washer and nut. Align mounts and **Tighten all bolts. See figure 5.**
9. Using the ECB DRL wiring harness included in fitting kit outside of ECB Indicator / park kit, splice Earth (white), indicator (green) and park light (black) into wiring harness at bottom of headlight. The fourth wire is connected to the DRL wire within the same wiring harness at bottom of headlight. Connect using cable locks (supplied). Ensure harness is clear of sharp edges and moving parts. **Caution:** The headlight may also contain a self levelling device which has permanent power. The DRL light turns off when the parking light / headlight is activated.
10. Connect ECB Quick Click fog light wiring harness (supplied) into original wiring harness.
11. Refit screws to front of headlight infills. Refit grill to front of vehicle.



**WORLD'S BEST
ALLOY BULLBARS**

East Coast Bullbars (ECB Pty Ltd)

Tel: 07 3897 5700

Fax: 07 3283 1168

ecb@ecb.com.au www.ecb.com.au

29 Snook St
Clontarf QLD 4019
Australia

Po Box 122
Margate QLD 4019
Australia

12. Fit ECB LED indicator / park lights into protection bar as per instructions supplied with the LED indicator kit.
NOTE: Ensure park light is to outside. See figure 6.
13. Attach ECB fog lights to protection bar. Place M6 x 20 bolts, spring washers (supplied) through light mount from inside and attach nut to top. Slide assembly into light mount in Protection bar and centralize light to hole.
TIGHTEN FIRM ONLY. See figure 7.
14. Attach 6mm clip lock trim (supplied) to top of ECB protection bar. **See figures 8 and 9.**
15. Install ECB infills to top of protection bar using three M6 x 20 bolts, flat washers and nyloc nuts. Place bolt heads to top. Finger tighten only leaving loose enough for adjustment. **See figure 10.**
16. Fit ECB protection bar to ECB steel mounts using six M12 x 40 bolts, flat washers, spring washers and nuts. Finger tighten only. **NOTE: There are two sets of hole in alloy mount for differing GVM vehicles.**
17. Align ECB protection bar to vehicle. **Tighten all bolts. See figure 11 and 12.**
18. Install alloy side mounts between top hole of vehicle side mount and protection bar mount on inside of channel using M10 x 40 bolts, flat washers, spring washers, and nuts. **See figure 13.**
19. Align ECB infill's with vehicle. **Tighten all bolts.** Paint front bolts black using paint pen or spray can.
20. Connect and check operation of ECB indicator / park lights, ECB fog lights. Align fog lights straight and at a slight downward angle.
21. Fit ECB side under body guards to top of lower leg of skirt using one M6 x 20 bolt, flat washers, spring washers and nyloc nuts for front outer hole and two M8 x 20 bolts, two flat washers and two 5/16 x 11/4 large washers, nyloc nuts for tow rear holes. Place large washer and nyloc nut on under body guard side. Place metal speed clip from outer lower section of inner guard onto rear most hole of under body guards. **See figure 14.**
22. Fit rear section of inner guard back into position on vehicle. Trim outer edge to sit behind side of ECB protection bar. Using rear mount on under body guard, drill 6mm hole in flat section of inner guard. Install original screw into previously drilled hole. Trim bottom of inner guard to suit bottom of under body guard. **See figure 15.**
23. Install centre under body guard between side under body guards and channel skirt. Fit using two M6 x 25 bolts in outer holes, and two M6 x 20 bolts, flat washers, spring washers and nyloc nuts. **NOTE: Front outer M6 bolts go through centre skirt, centre under body guard and side under body guard on each side. See figure 16.**

ENSURE NUMBER PLATE IS CLEARLY VISABLE

Note: When fitting/refitting the licence plate to the vehicle, ensure there is no obstruction to licence plate vision in accordance with local authorities. If required relocate licence plate to an alternate location.

Further VFPS Notes:

- a) Do not attach VFPS to the vehicle using anchorages not intended for this purpose (e.g. engine mounting bolts).
- b) Do not use this product for any vehicle make or model, other than those specified by the VFPS manufacturer.
- c) Do not remove the plaque or label from the VFPS.
- d) Do not modify the structure of the VFPS in any way.
- e) No accessory or fitment should project forward of the VFPS forward profile.
- f) **ENSURE THESE INSTRUCTIONS ARE LEFT WITH VEHICLE OWNER AND/OR OPERATOR.**



**WORLD'S BEST
ALLOY BULLBARS**

East Coast Bullbars (ECB Pty Ltd)

Tel: 07 3897 5700

Fax: 07 3283 1168

ecb@ecb.com.au www.ecb.com.au

29 Snook St
Clontarf QLD 4019
Australia

Po Box 122
Margate QLD 4019
Australia

IMPORTANT INFORMATION

Periodically check bolts and nuts for correct tightness, especially if travelling on rough roads

FITTING KIT

1 – Pair steel mounts	4 - 5/16 x 11/4 large washers
1 – Pair 3mm alloy infills	4 – M8 nyloc nuts
1 – Pair side under body guards	2 – M6 spring washers
1 – Centre under body guard	7 – M6 nyloc nuts
1 – Pair alloy side mounts (<i>In kit</i>)	14 – M6 flat washers
3 – M12 x 1.75 x 75 bolts	2 - M6 x 25 bolts
7 – M12 x 1.75 x 40 bolts	7 - M6 x 20 bolts
2 - M12 x 1.75 x 50 bolts	2 – M6 nuts
18 – M12 flat washers	2 – bolt washers 90mm x 50mm
12 – M12 spring washers	2 – bolt washers 110mm x 50mm
7 – M12 x 1.75 nuts	1 – ECB LED Indicator / Park light kit
8 – M10 x 1.5 x 40 bolts	1 – Pair DRL indicator / park light tail (IC11IVDAINDH)
16 – M10 flat washers	1 – 55 watt fog light kit
8 – M10 spring washers	1 – Quick Click fog wiring kit (IC10D401004ECBH)
8 – M10 x 1.5nuts	4 – Fog light trims
4 – M8 x 1.5 x 40 bolts	8 – Cable locks
4 – M8 flat washers	1 – 1250mm Length 6mm clip lock trim

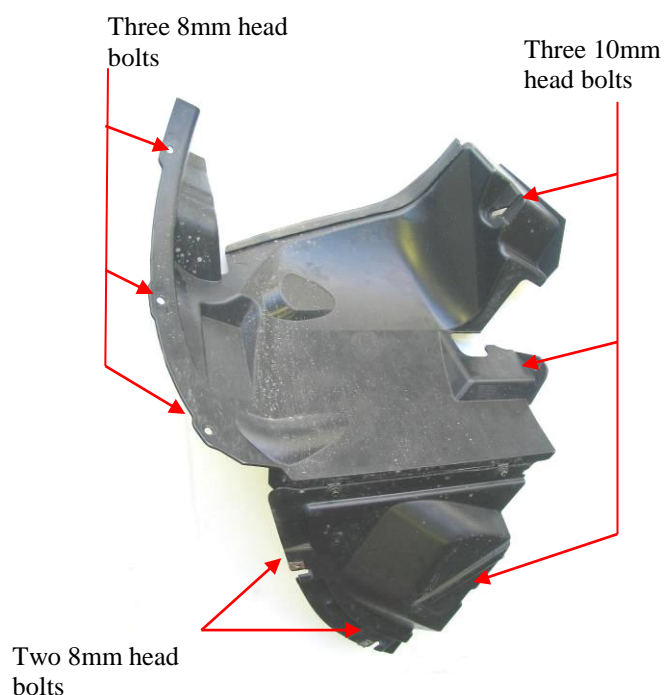


Figure 1: Front inner guard. Removed from vehicle for photo.

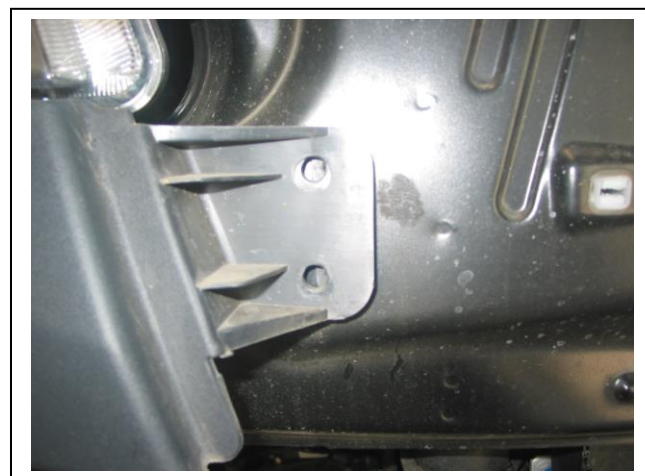


Figure 2: Two screws removed from filler panel under headlight.

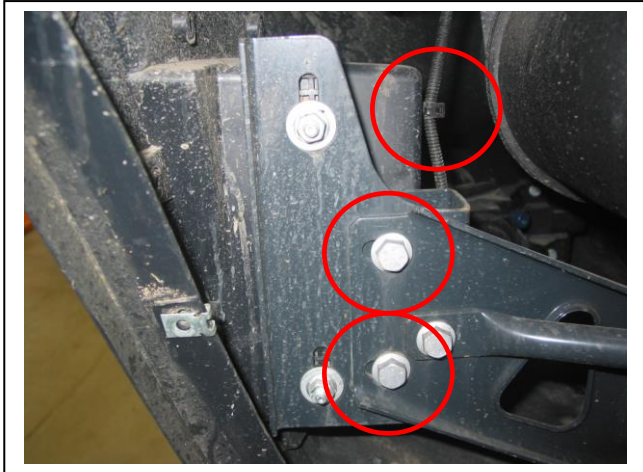


Figure 3: Two 16mm head bolts to remove and disconnect wiring harness from mount.

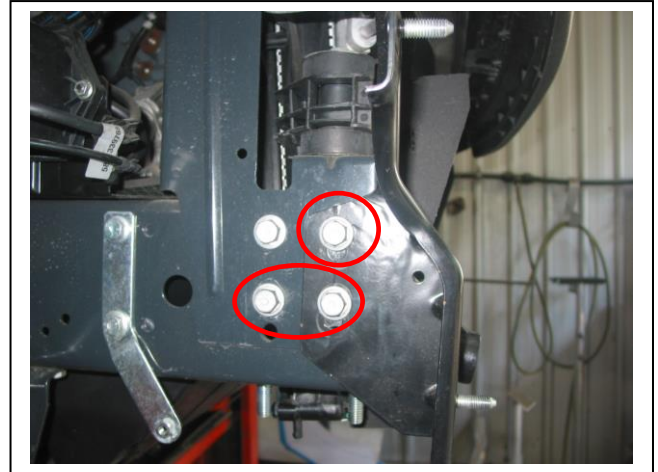


Figure 4: Remove three 16mm head bolts from front of chassis rail.

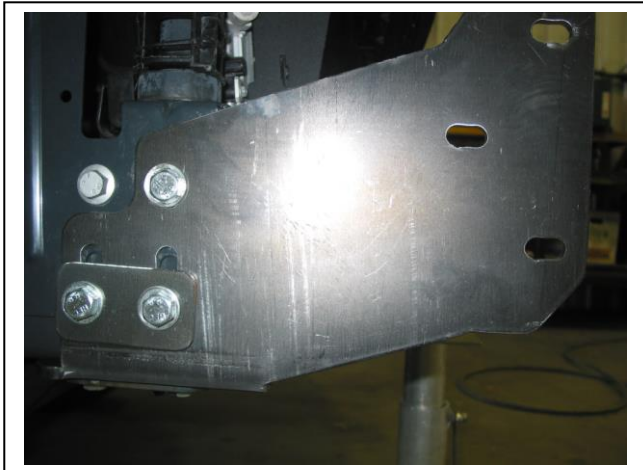
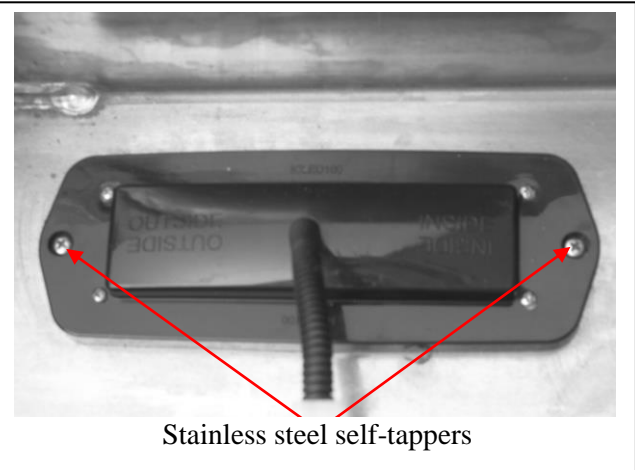
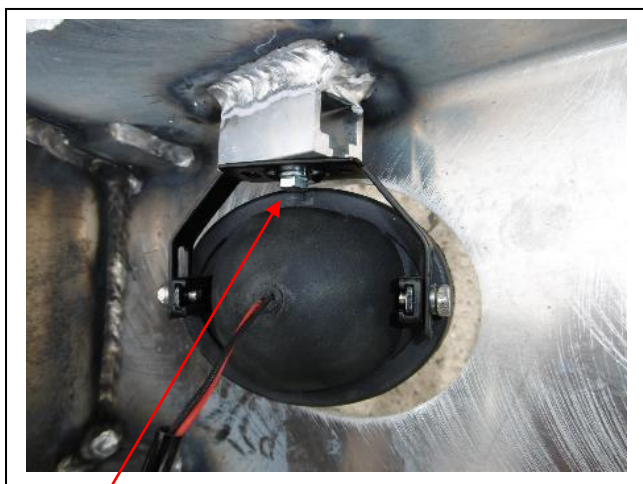


Figure 5: ECB Steel mounts fitted to chassis rails.



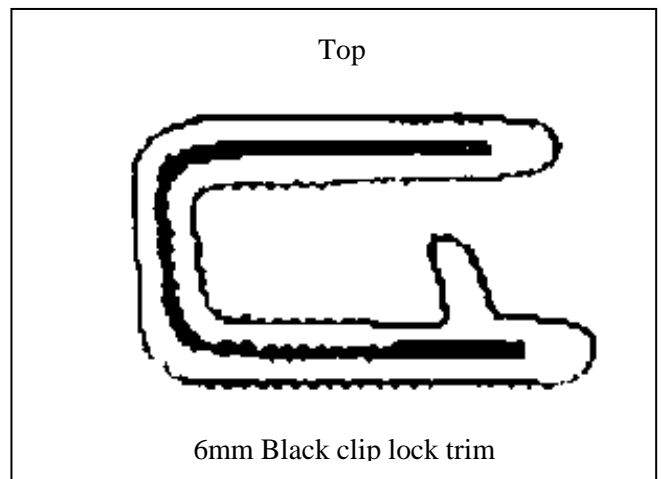
Stainless steel self-tappers

Figure 6



M6 bolt

Figure 7



6mm Black clip lock trim

Figure 8



**WORLD'S BEST
ALLOY BULLBARS**

East Coast Bullbars (ECB Pty Ltd)

Tel: 07 3897 5700

Fax: 07 3283 1168

ecb@ecb.com.au www.ecb.com.au

29 Snook St
Clontarf QLD 4019
Australia

Po Box 122
Margate QLD 4019
Australia

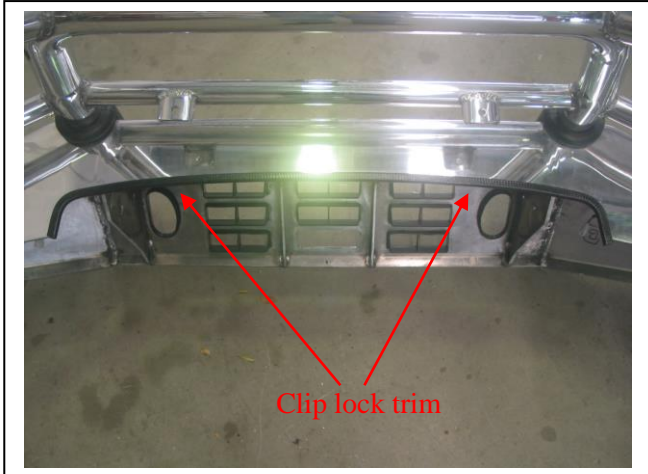


Figure 9



Figure 10: Install infill's to top of ECB protection bar. Paint front bolt black.



Figure 11: Front view



Figure 12: Side view



Figure 13: Side mounts installed.

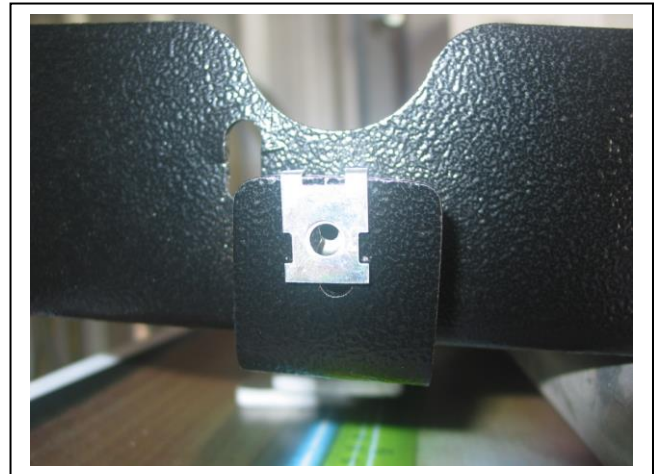


Figure 14: Speed clip from inner guard attached to rear of under body guard.



**WORLD'S BEST
ALLOY BULLBARS**

East Coast Bullbars (ECB Pty Ltd)

Tel: 07 3897 5700

Fax: 07 3283 1168

ecb@ecb.com.au www.ecb.com.au

29 Snook St
Clontarf QLD 4019
Australia

Po Box 122
Margate QLD 4019
Australia



Figure 15: Rear of side under body guard showing inner guard trim line.



Figure 16: Centre under body guard fitted.



**WORLD'S BEST
ALLOY BULLBARS**

East Coast Bullbars (ECB Pty Ltd)

Tel: 07 3897 5700

Fax: 07 3283 1168

ecb@ecb.com.au www.ecb.com.au

29 Snook St
Clontarf QLD 4019
Australia

Po Box 122
Margate QLD 4019
Australia

We value your comments

Dear Fitter,

ECB would like to know how you went with the installation of this product. We value your comment and may need to contact you to clarify some details so please complete your contact details clearly.

We would appreciate if you could complete as many of the following details as possible.

Your Name:	Your contact No.
Product Part No.	Product Invoice No.
Product Description:	Make, model, and year of vehicle:
Product Work Order No.	Company your from/Company product purchased from:

Date of Fitment: ____/____/____

Was the fitting hardware supplied complete?

Yes

☐

No

☐

If no what was not supplied

Did the installation go well?

Yes

☐

No

☐

Please provide comments

Please draw diagrams if you need to.

Post to

Reply Paid 122

PO Box 122

Margate QLD 4019

Fax to

(07) 3283 1168



**WORLD'S BEST
ALLOY BULLBARS**

East Coast Bullbars (ECB Pty Ltd)

Tel: 07 3897 5700

Fax: 07 3283 1168

ecb@ecb.com.au www.ecb.com.au

29 Snook St
Clontarf QLD 4019
Australia

Po Box 122
Margate QLD 4019
Australia



**WORLD'S BEST
ALLOY BULLBARS**

East Coast Bullbars (ECB Pty Ltd)

Tel: 07 3897 5700

Fax: 07 3283 1168

ecb@ecb.com.au www.ecb.com.au

29 Snook St
Clontarf QLD 4019
Australia

Po Box 122
Margate QLD 4019
Australia

DESPATCH CHECKLIST BI38SY

Work Order #		See other side of this page for photos of all mounts
Finish:		
Transport:		
Due Date:		

- OC.....1 – Pair steel mounting brackets.
- BK.....1 – Pair alloy side mounts
- OC.....1 – pair alloy infills
- OC.....1 – Pair side under body guards
- OC.....1 – centre under body guard
- BK.....1 – Bolt Kit.
- BK.....2 - 90mm x 50mm bolt washers
- BK.....2 - 110mm x 50mm bolt washers
- BK.....1 – LED ECB indicator / park light kit.
- BK.....1 – Pair DRL indicator / park light tail
- BK.....1 – Fog light kit
- BK.....1 – Quick Click fog wiring kit (IC10D401004ECBH)
- BK.....1 – 1250mm length 6mm clip lock
- OC.....2 – ECB Overrides – **Fitted to Bar**
- OC.....13 – 6mm Air Vents – **Fitted to Bar**
- OC.....4 – Fog light surrounds



Is this product “the best it can be” Yes _____/_____
Wrapper's initials / Checker initials

If **NO** fix before continuing

All parts checked and completed by:

Nut and bolts: _____ Date __/__/__

Order control: _____ Date __/__/__

Final wrap check: _____ Date __/__/__



**WORLD'S BEST
ALLOY BULLBARS**

East Coast Bullbars (ECB Pty Ltd)

Tel: 07 3897 5700

Fax: 07 3283 1168

ecb@ecb.com.au www.ecb.com.au

29 Snook St
Clontarf QLD 4019
Australia

Po Box 122
Margate QLD 4019
Australia



Pair 3mm alloy Infills



6mm alloy side mounts

Pair under body guards



Pair steel mounts

Two pair bolt washers – in kit



Centre under body guard